



2016 社会责任报告  
CSR REPORT

**PORTON**

重庆博腾制药科技股份有限公司

---

.....	1
.....	3
.....	4
2.1	4
2.2	7
2.3	10
2.4	10
2.5	11
.....	12
3.1	12
3.2	13
3.3	15
3.4	16
3.5	17
3.6	18
.....	20
4.1	20
4.2	21
4.3	21
.....	23
5.1	23
5.2	23
5.3	24
5.4	25
.....	26
.....	28
7.1 G4	28
7.2	36

2016

2016 1 1 2016 12 31

G4

ISO26000

CASS-CSR3.0

Global Reporting Initiative, GRI

4.0

G4

GRI

[www.cninfo.com.cn](http://www.cninfo.com.cn)

[cn.porton.cn](http://cn.porton.cn)

400714

023-65936900

[porton.db@porton.cn](mailto:porton.db@porton.cn)

023-65936901

2016

2016  
30%  
CRO+CMO

2016  
13.27  
CDMO  
CMO



A handwritten signature in black ink is written over a pink rectangular stamp. The signature is stylized and appears to be 'J. S. P.'. The stamp is a solid pink color.

**2.1**

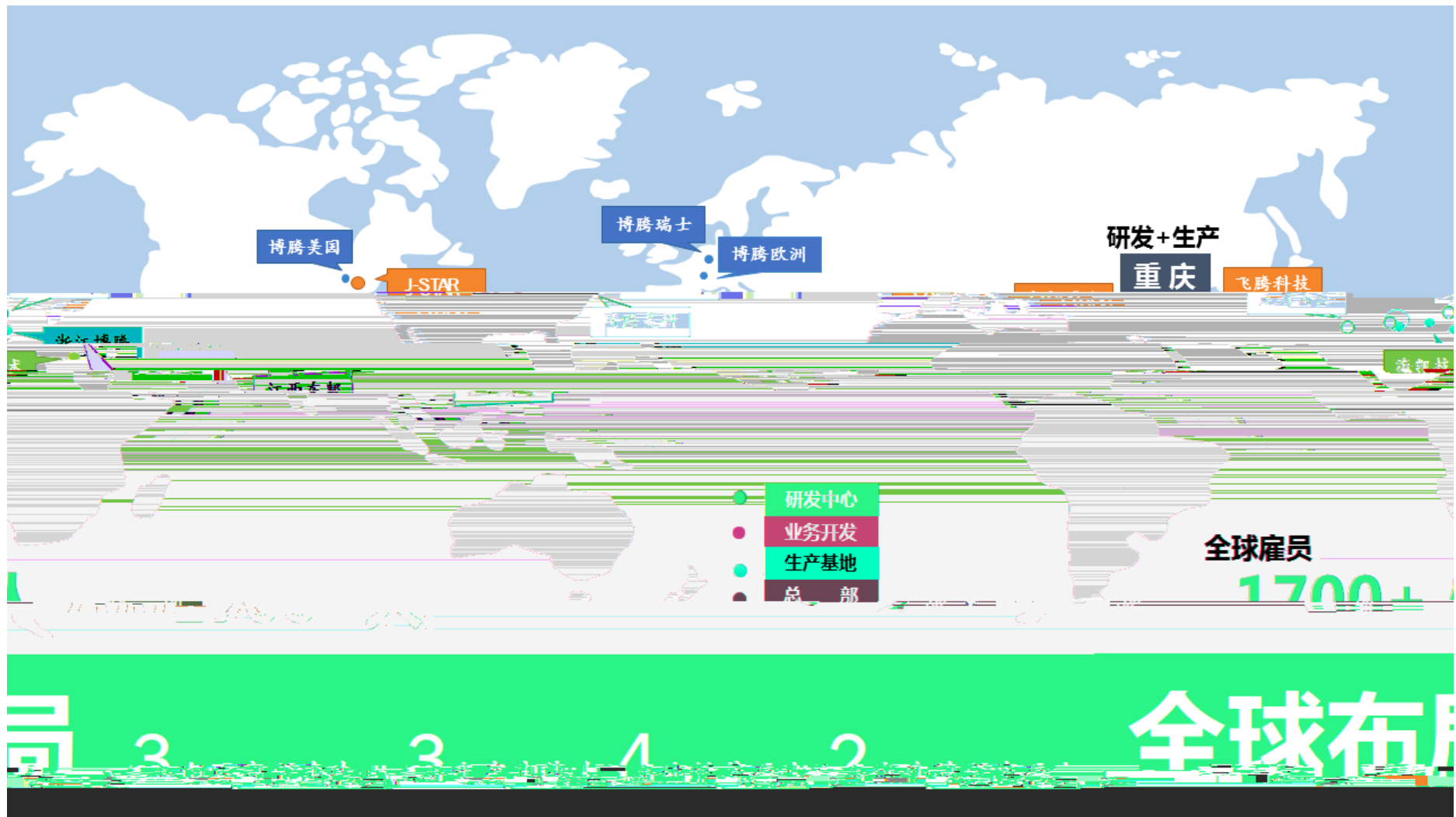
2005 7

2014 1 29

300363



3+3+2



	2016	2015	2014
)	1,326,634,032.04	1,021,209,221.41	987,255,905.80
)	171,189,670.04	110,394,837.60	125,486,041.39
)	205,330,340.85	131,756,445.04	147,848,233.79
)	173,680,392.83	107,789,198.80	121,201,666.46
)	2,871,450,074.70	2,379,401,254.40	1,854,955,198.54
)	1,283,526,763.94	1,119,470,419.07	810,810,795.77
)	285,331,010.32	112,313,252.11	121,921,427.19
/ )	0.41	0.27	0.32
/	0.40	0.27	0.32
(%)	14.30	11.95	17.13

		2016
		6,260
		3,659
	%	98
		1,727
	%	100
	%	100
		2,856
		1,727
		393
	%	22.9
	%	100
		18
	%	100
	%	22



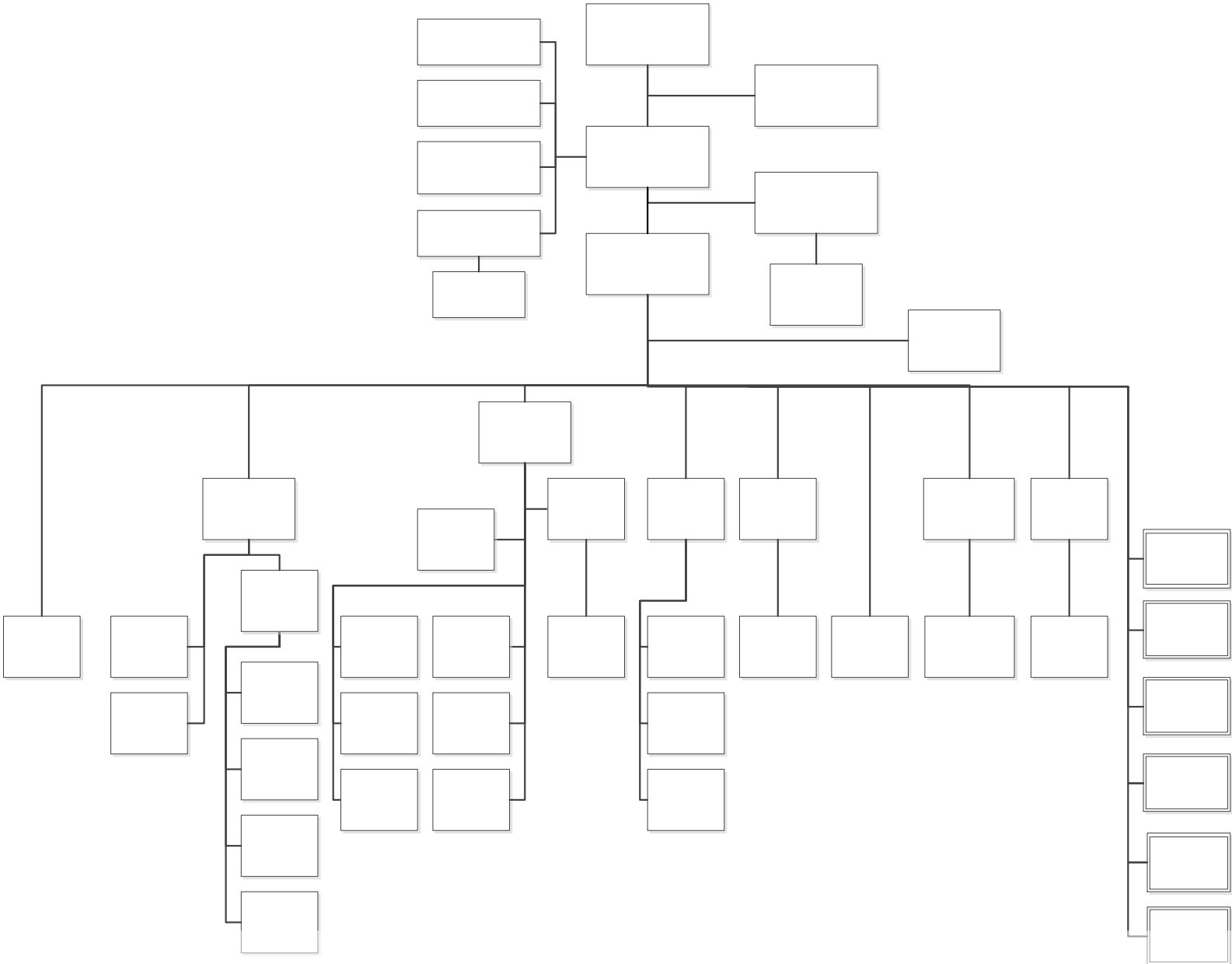
		2016
		53.2
	%	100
	m <sup>3</sup>	317,318
	%	100

**2.2**

**2.2.1**

2016





**2.2.2**

0

023-65936900

porton.db@porton.cn



2.3

2014-2016

R4& s&</n

1		
2		
3	2014	CPhI China
4		
5	CPhI	CPhI China
6	2014	



**3.1**

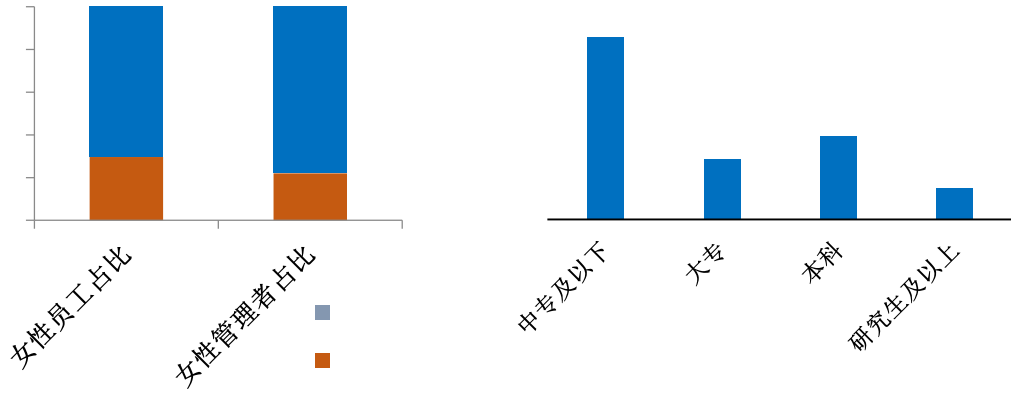
100%

100%

2016

2,856

100%



3.2

/

2016

		2014		2015		2016	
&		76,878.36	6,406.53	78,135.72	6,511.31	84,811.80	7,067.65
		53,812.08	4,484.34	58,968.72	4,914.06	64,438.56	5,369.88
		1,250.00		1,250.00		1,500.00	
		1,400.00		1,500.00		1,500.00	
		147,683.64	12,306.97	153,139.92	12,761.66	162,125.64	13,510.47
		98,113.32	8,176.11	85,754.52	7,146.21	88,873.20	7,406.10

		2014		2015		2016	
		3,022.00		3,271.00		3,563.00	
		106,030.32	8,835.86	88,491.72	7,374.31	74,351.76	6,195.98
		43,768.32	3,647.36	60,817.92	5,068.16	58,665.60	4,888.80
		1,310.00		1,470.00		1,660.00	
		49,984.20	4,165.35	61,650.12	5,137.51	62,901.60	5,241.80
		41,345.40	3,445.45	40,168.44	3,347.37	46,020.48	3,835.04
		980.00		1,060.00		1,180.00	

/

/

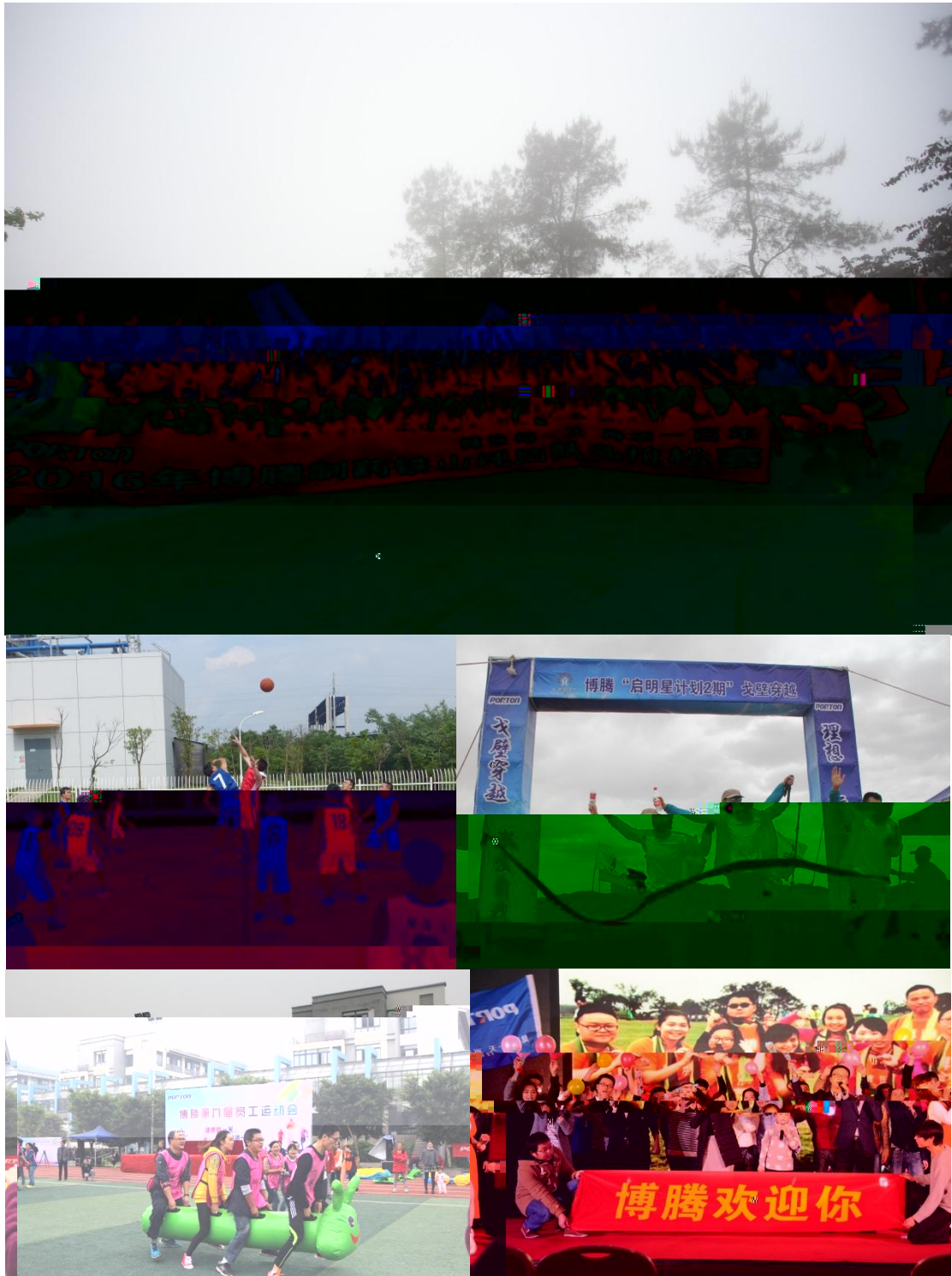
/

2014

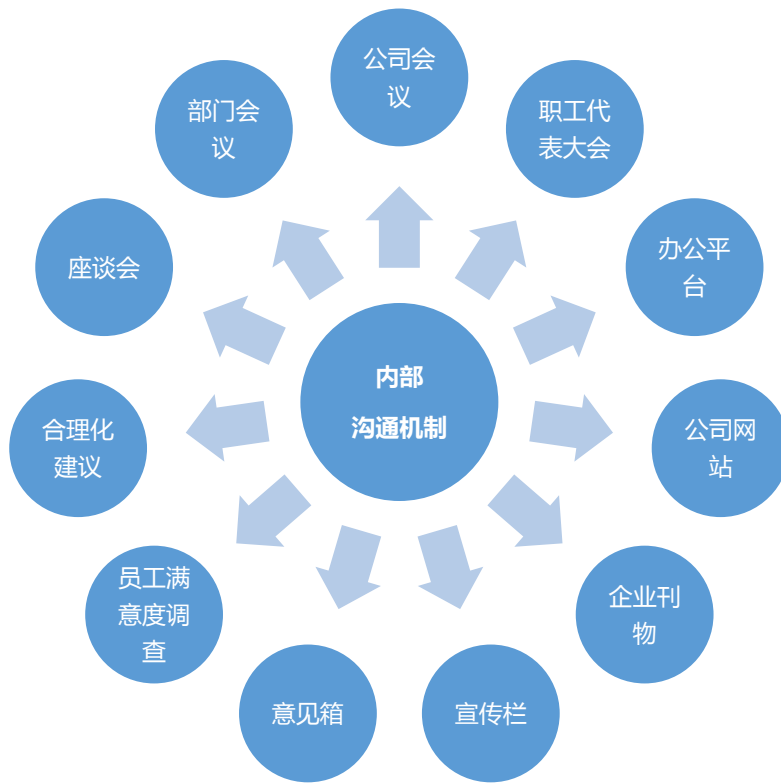
2016

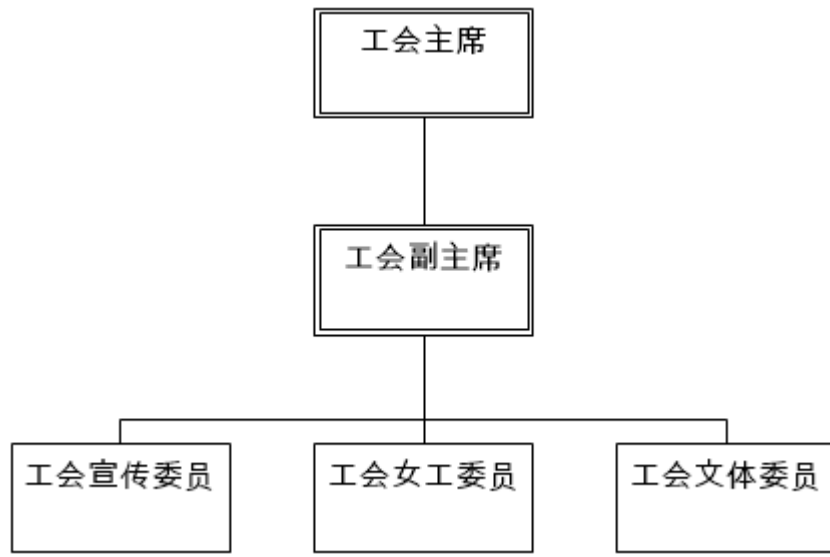


3.3



3.4





3.5

EHS

HAZOP

SWIFT

RBEAP



**PPE**



**PPE**

100%

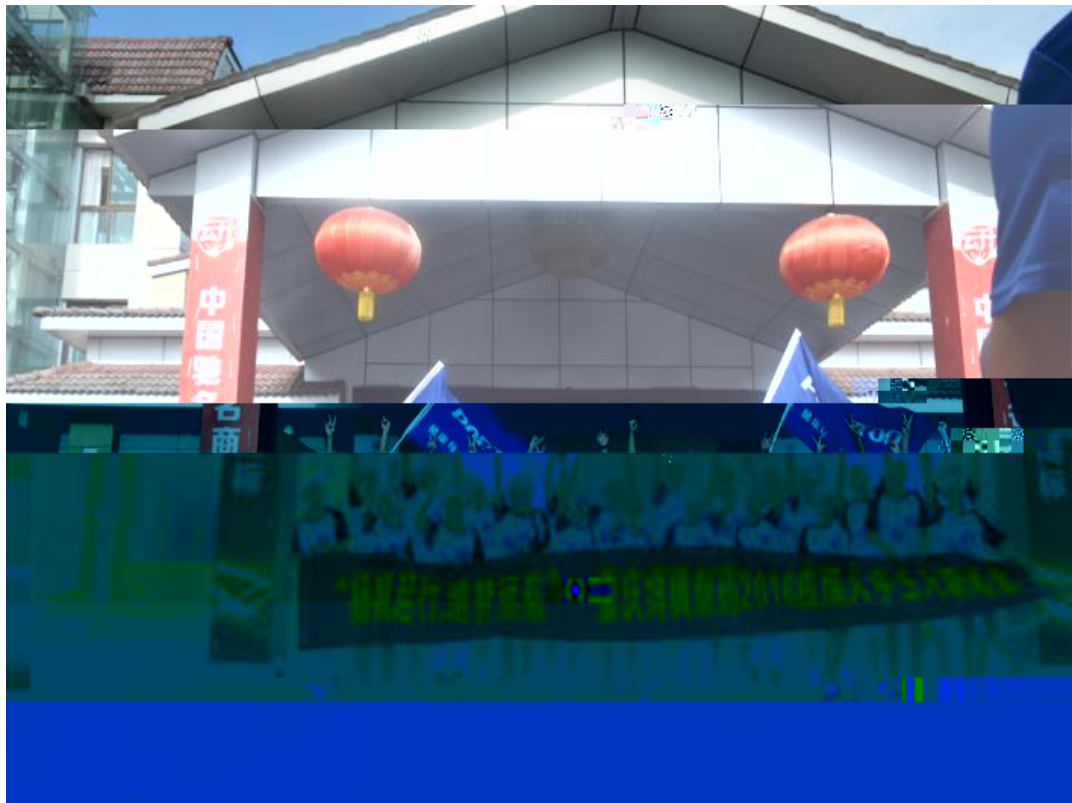
**3.6**

2016

57,062

	351	3,401	7,353.60	20.95
	182	33,200	23,604.19	129.69

MCP	31	137	830.13	26.78
	132	4,753	15,161.16	114.86
	28	73	645.10	23.04
	723	13,777	38,797.34	53.66
	154	829	2,794.21	18.14
	165	892	4,762.43	28.86
	<b>1,766</b>	<b>57,062</b>	<b>93,948.16</b>	<b>53.20</b>



**4.1**

**4.1.1**

3

100%

	2014	2015	2016
	93%	95%	98%

**4.1.2**

2016

16

GMP

2015

FDA

GMP

GMP

FDA

2016 9

FDA

EIR

**4.1.3**

2016 12 31

27

20

7

18

PCT

1

1	DGAT-1		2016 9 14
2			2016 7 20
3	HCV		2016 6 8
4			2016 6 8
5			2016 3 30
6			2015 9 30
7			2015 3 4
8			2014 6 4
9			2014 5 7
10	L-(S)-		2006 3 29

**4.2**

2016

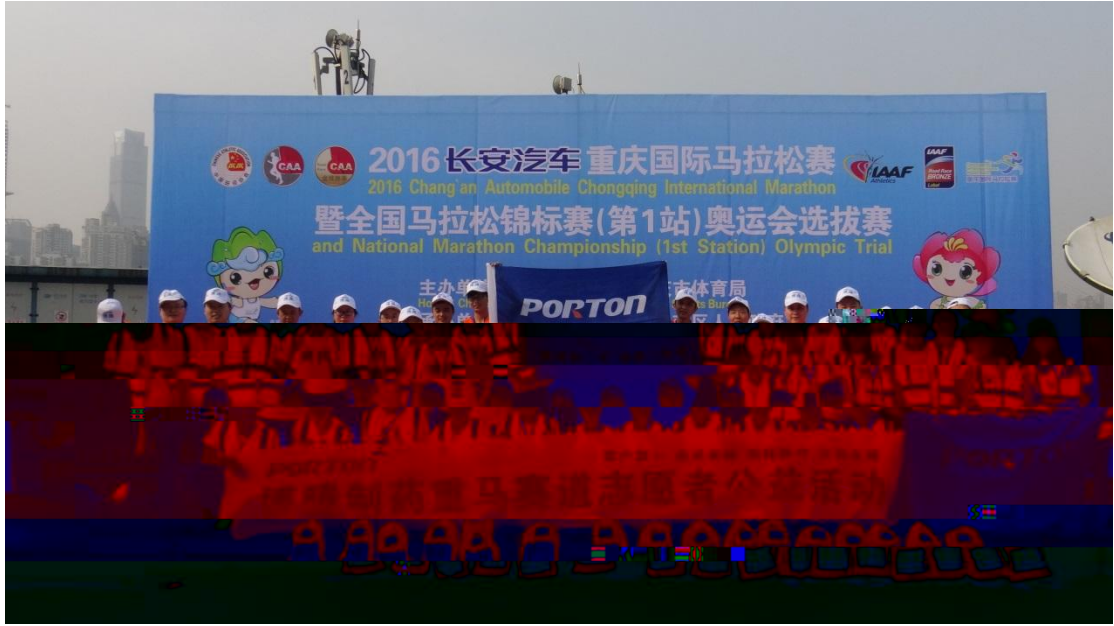
100%

100%

**4.3**









**5.1**



**5.2**



2016

5.3

**5.4**

/

/ / / /

100%

IMS Health 5  
2020 14,000 2015  
29% 32% 50% 2020  
5 Adis R&D Insight  
2016-2020 225 NAS  
45  
GMP  
GMP  
Nice Insight  
CMO  
70% I 71%  
II

CDMO

CMO

CRO+CMO

2017

**7.1 G4**

**7.1.1**

G4-1		/
G4-2		/

G4-3		2.1
G4-4	/	2.1
G4-5		2.1
G4-6		2.1
G4-7		2.1
G4-8	/	2.1
G4-9		2.1
G4-10		2.1
G4-11		2.1
G4-12		4.2
G4-13		
G4-14		2.2.2
G4-15		2.5
G4-16		2.5

G4-17		2.1
G4-18		2.1
G4-19		2.1
G4-20		2.1
G4-21		2.1
G4-22		/
G4-23		

G4-24		2.4
G4-25		2.4
G4-26		

G4-34		2.1
G4-35		2.1
G4-36		/
G4-37		3.4
G4-38		2.1
G4-39		2.1
G4-40		/
G4-41		3.4
G4-42		/
G4-43		2.2.1/3.4
G4-44		/
G4-45		2.2.1/2.3
G4-46		2.2.1/2.3
G4-47		/



G4-48		2.3
G4-49		2.2.1
G4-50		2.2.1
G4-51		3.4

G4-EC1		2.1
G4-EC2		/
G4-EC3		3.2
G4-EC4		2.1
G4-EC5		3.2
G4-EC6		2.1
G4-EC7		/
G4-EC8		/
G4-EC9		/
G4-EN1		/
G4-EN2		/
G4-EN3		5.2
G4-EN4		/
G4-EN5		5.2
G4-EN6		5.2
G4-EN7		/
G4-EN8		5.2
G4-EN9		
G4-EN10		/
G4-EN11		
G4-EN12		5.4
G4-EN13		/
G4-EN14	(IUCN)	/
G4-EN15		5.2
G4-EN16		5.2
G4-EN17		/
G4-EN18		/
G4-EN19		/

G4-EN20	(ODS)	/
G4-EN21		/
G4-EN22		5.4
G4-EN23		/
G4-EN24		5.2
G4-EN25	I II III VIII	5.4
G4-EN26		/
G4-EN27		5.3
G4-EN28		5.3
G4-EN29		5.2
G4-EN30		5.2
G4-EN31		5.2
G4-EN32		/
G4-EN33		/
G4-EN34		5.2
G4-LA1		3.1
G4-LA2		3.2
G4-LA3	/	3.2
G4-LA4		3.2
G4-LA5		3.4
G4-LA6		3.5
G4-LA7		3.5
G4-LA8		3.5
G4-LA9		3.6
G4-LA10		3.6

G4-LA11		3.6
G4-LA12		3.1
G4-LA13		3.2
G4-LA14		4.2
G4-LA15		4.2
G4-LA16		
G4-HR1		2.2.2
G4-HR2		/
G4-HR3		
G4-HR4		3.4
G4-HR5		3.1
G4-HR6		3.1
G4-HR7		/
G4-HR8		
G4-HR9	/	/
G4-HR10		4.2
G4-HR11		2.2.2
G4-HR12		
G4-SO1		4.3
G4-SO2		
G4-SO3		2.2.2

G4-SO4		2.2.2
G4-SO5		
G4-SO6	/	
G4-SO7		2.2.2
G4-SO8		
G4-SO9		4.2
G4-SO10		/
G4-SO11		/
G4-PR1		4.1
G4-PR2		
G4-PR3		/
G4-PR4		/
G4-PR5		4.1.1
G4-PR6		
G4-PR7		
G4-PR8		
G4-PR9		

7.2

( )

1

2

3

4

:

2016

400714

023-65936900

porton.db@porton.cn

023-65936901